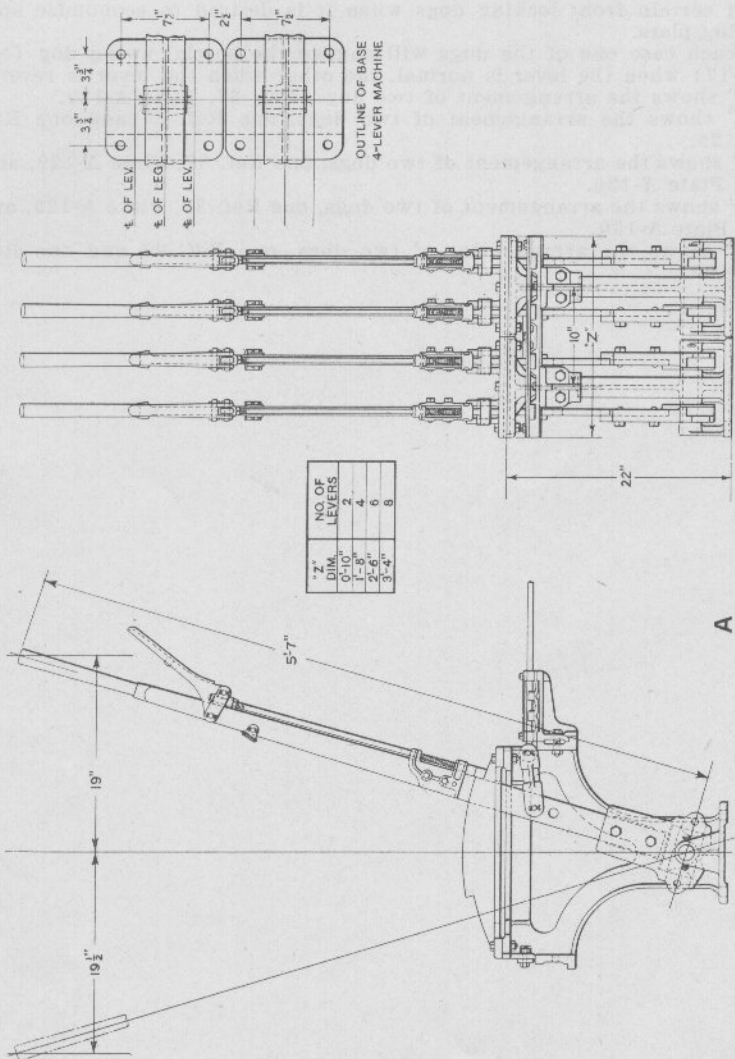


UNION SWITCH & SIGNAL COMPANY



UNION SWITCH & SIGNAL COMPANY

**THE STEVENS INTERLOCKING MACHINE
ARRANGED FOR HORIZONTAL OR VERTICAL LEADOUT**

This machine, although made of the best quality of material, has no preliminary locking arrangement, and is best adapted for throwing side track switches, or switches in ladder tracks where it would be inconvenient and expensive to have a man running from one switch stand to another, or to have a number of men stationed at the different switches. By concentrating the switch connections at one central point, using a machine, one man can easily do the work of half a dozen under the old plan.

If locking is desired, it can be supplied of the ordinary Stevens type, but we do not advise the use of this machine for anything but yard work.

The levers of this machine are now fitted with separate lever shoes, so that either front or back tail levers, or both, can be applied.

If locking is desired a signaled track plan should be furnished, showing the relation of the front of the machine to the track (the front of the machine is that part occupied by a man when operating the levers), also the route or routes to be governed by each signal, and the kind of connections (whether pipe or wire) which will be employed by the latter. Orders should clearly state the number of levers and spare spaces desired and whether the machine is to be arranged for vertical or horizontal leadout.

Machines complete include jaws, shackles, pins, bolts and cotters.

**Order by Plate, Piece, Reference and Abbreviated Description Given in
Heavy Face Type Only.**

Drawing references are shown for convenience in checking material with shipping lists and invoices.

Stevens Interlocking Machine, complete with Working Levers and Spare Spaces				
Ref.	Capacity of Machine Frame	Connections	Locking	Drawing Reference
A	Two Lever Frame	Horizontal	Without	D-897-3
Aa	Two Lever Frame	Horizontal	With	D-897-3
Ab	Two Lever Frame	Vertical	Without	D-897-3
Ac	Two Lever Frame	Vertical	With	D-897-3
Ad	Four Lever Frame	Horizontal	Without	D-897-3
Ae	Four Lever Frame	Horizontal	With	D-897-3
Af	Four Lever Frame	Vertical	Without	D-897-3
Ag	Four Lever Frame	Vertical	With	D-897-3
Ah	Six Lever Frame	Horizontal	Without	D-897-3
Aj	Six Lever Frame	Horizontal	With	D-897-3
Ak	Six Lever Frame	Vertical	Without	D-897-3

Zachary C. Gillihan 2008

PLATE A-140

UNION SWITCH & SIGNAL COMPANY

THE STEVENS INTERLOCKING MACHINE ARRANGED FOR HORIZONTAL OR VERTICAL LEADOUT

(Continued)

Order by Plate, Piece, Reference and Abbreviated Description Given in
Heavy Face Type Only.

Drawing references are shown for convenience in checking material with
shipping lists and invoices.

Ref.	Capacity of Machine Frame	Connections	Locking	Drawing Reference
Am	Six Lever Frame	Vertical	With	D-897-3
An	Eight Lever Frame	Horizontal	Without	D-897-3
Ap	Eight Lever Frame	Horizontal	With	D-897-3
Aq	Eight Lever Frame	Vertical	Without	D-897-3
Ar	Eight Lever Frame	Vertical	With	D-897-3